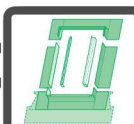
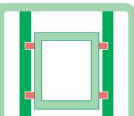
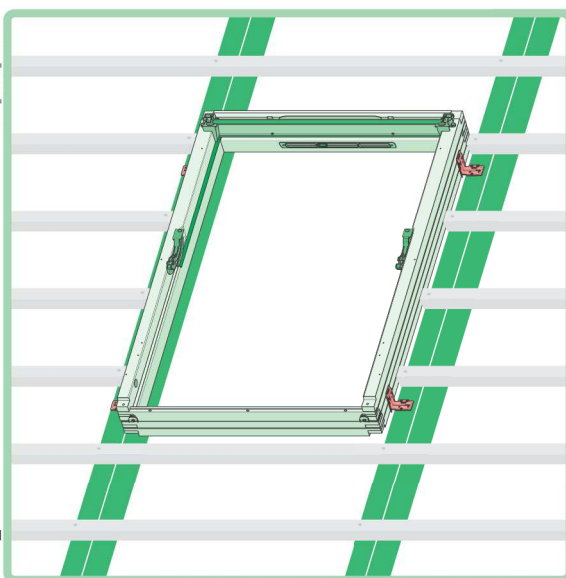
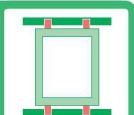
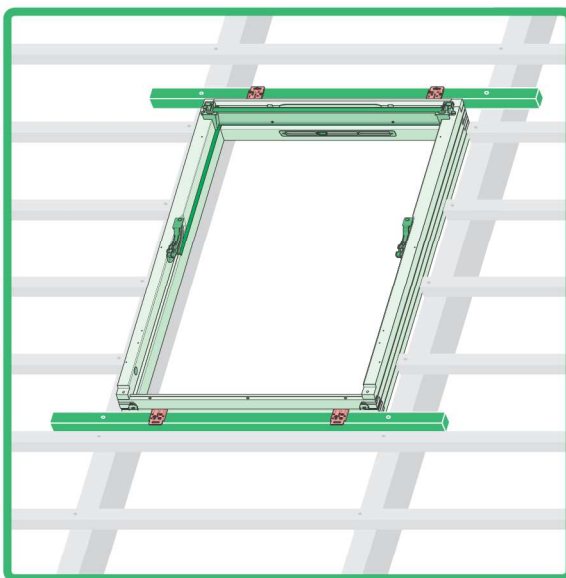
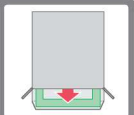
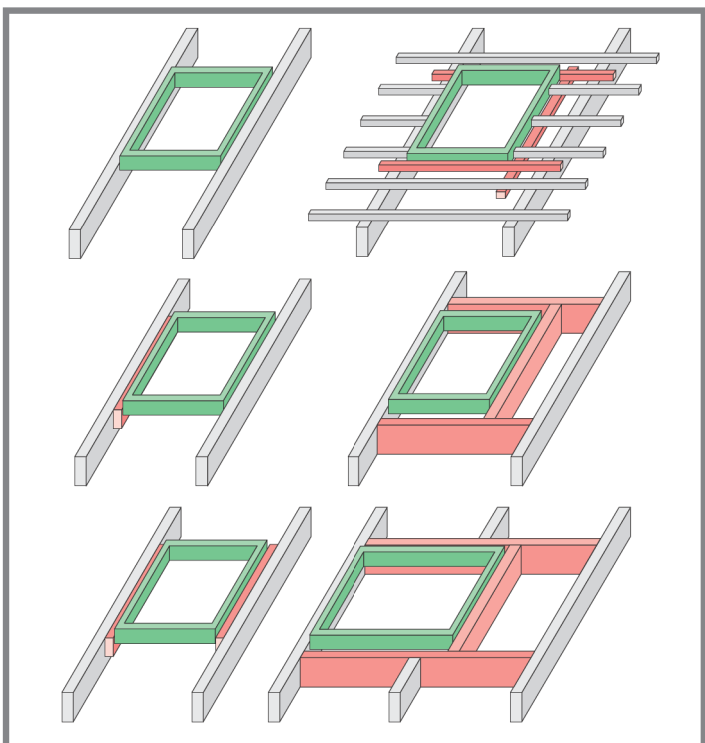
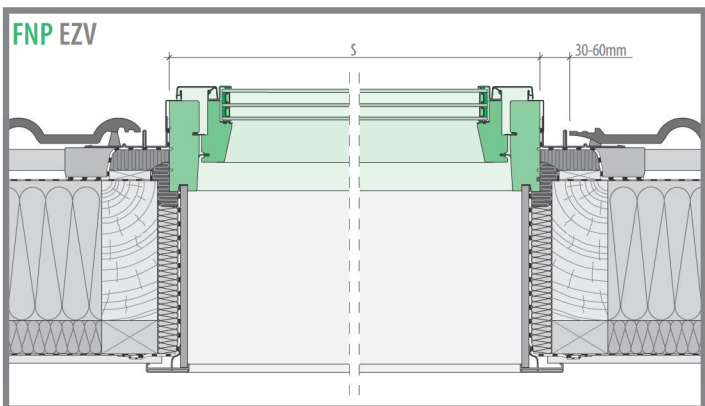
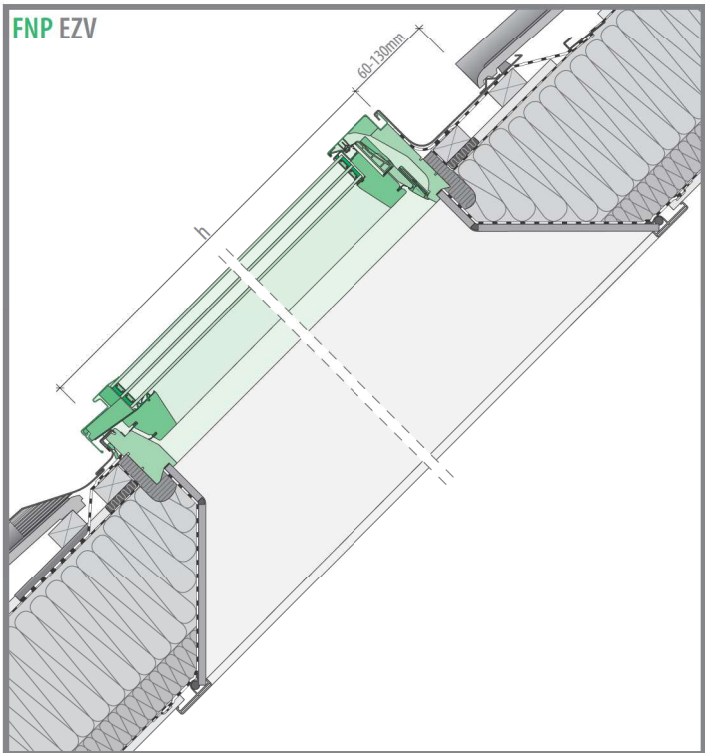


# FNP, FNU, FNW



20  
19  
18  
17  
16  
15  
14  
13  
12  
11  
10  
9  
8  
7  
6  
5  
4  
3  
2  
1  
0 [cm]

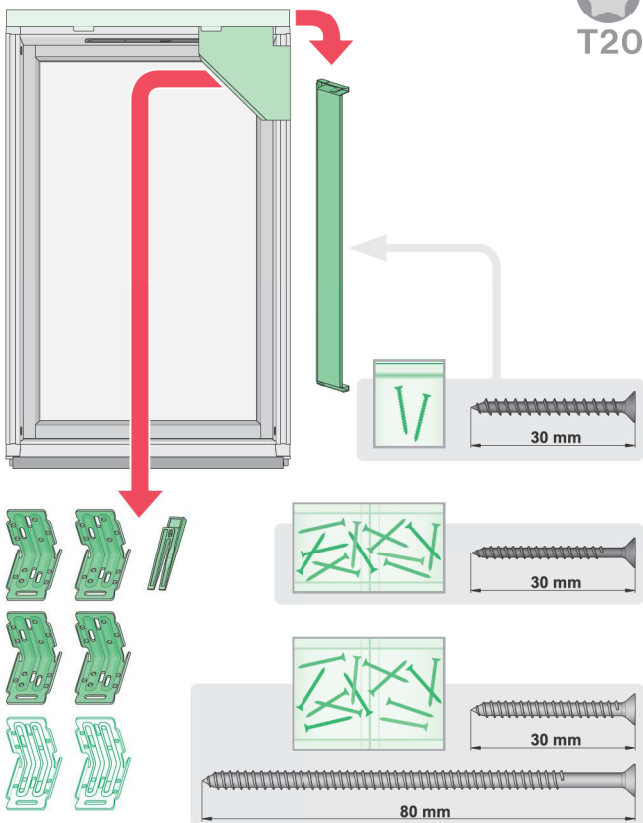




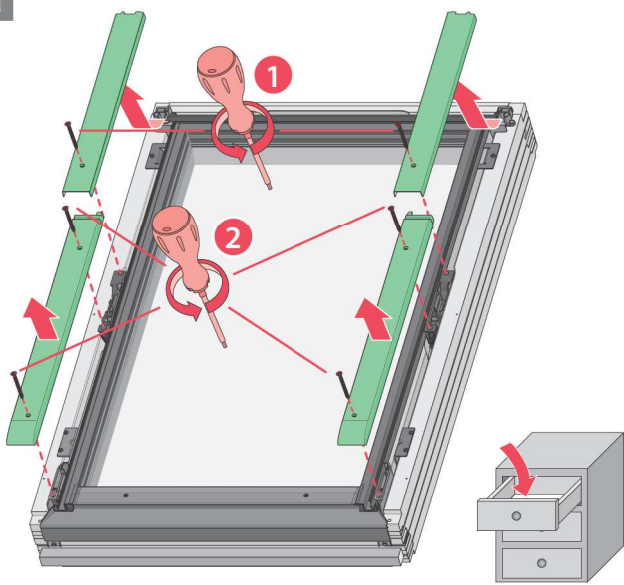
1



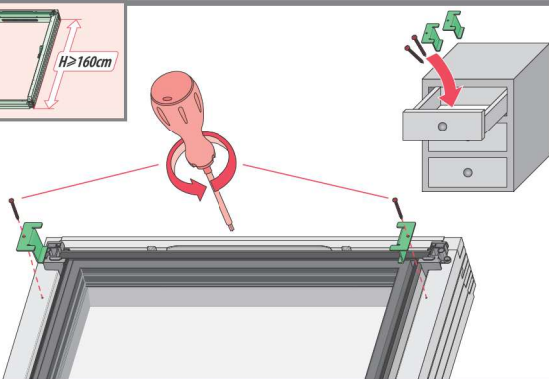
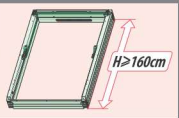
T20

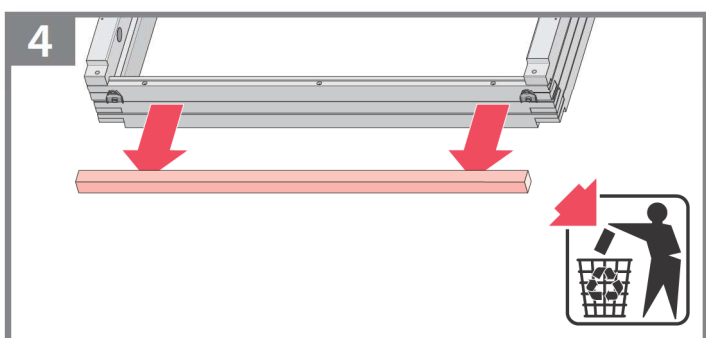
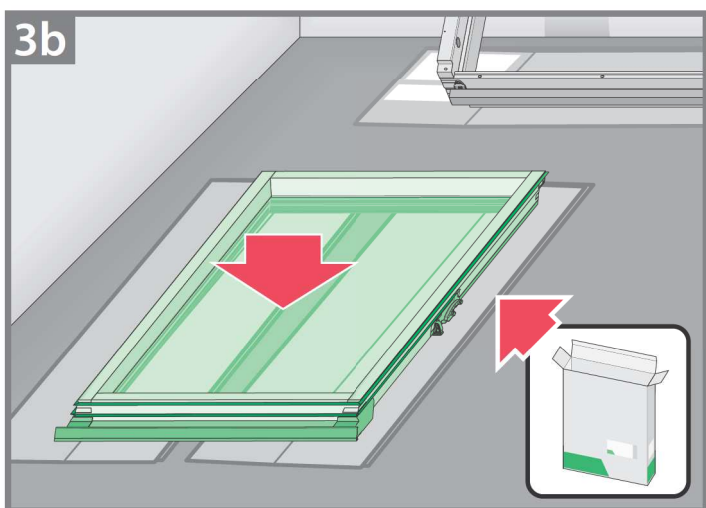
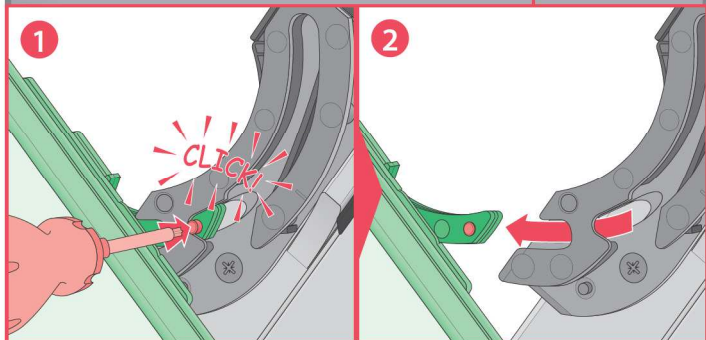
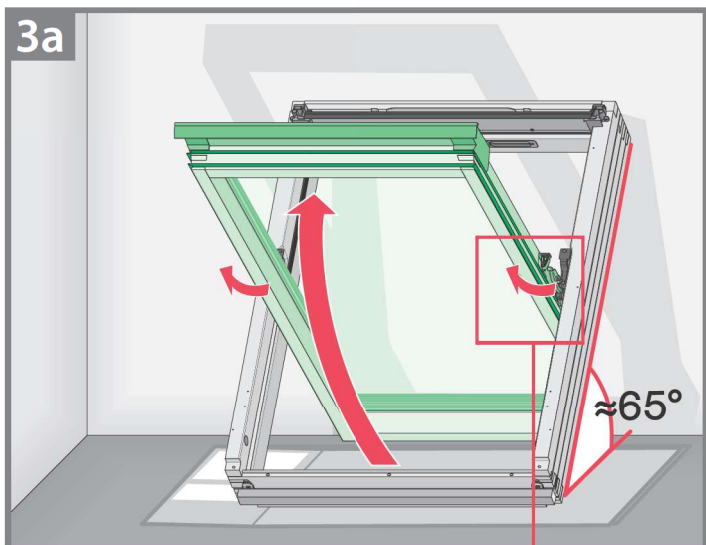
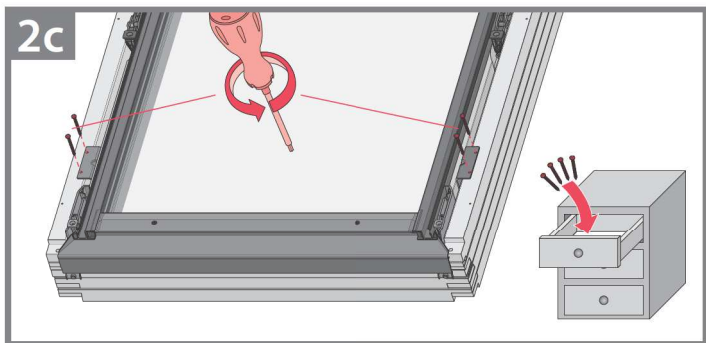


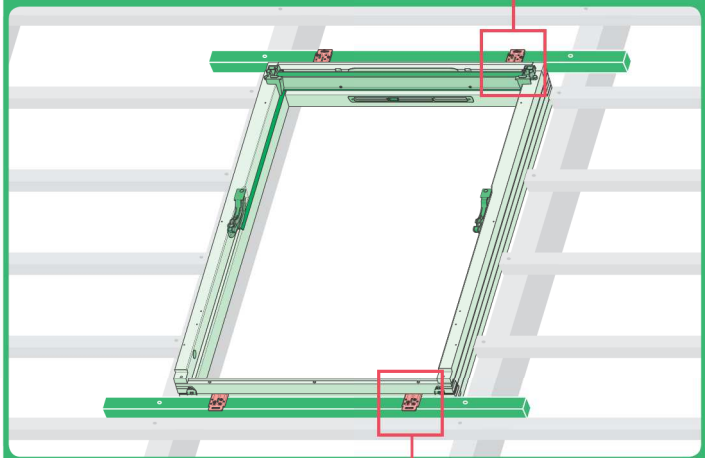
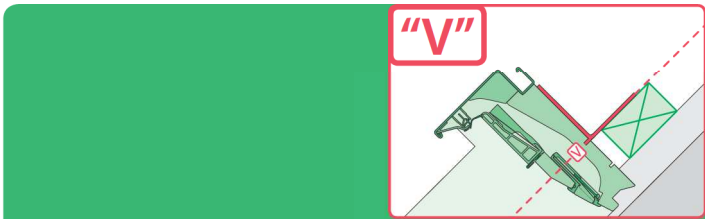
2a



2b

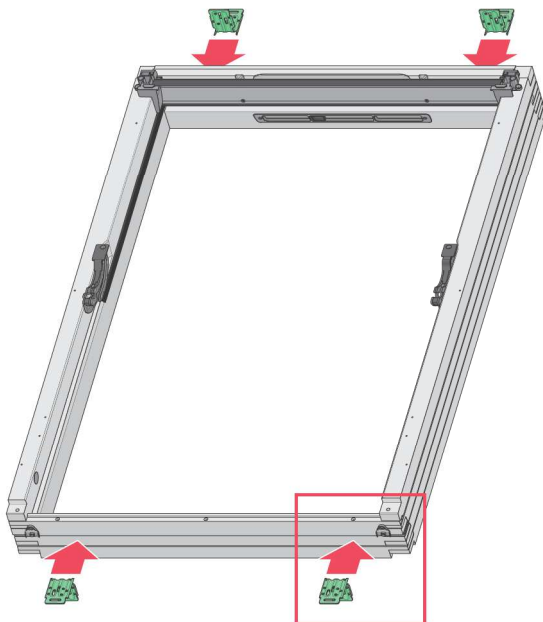




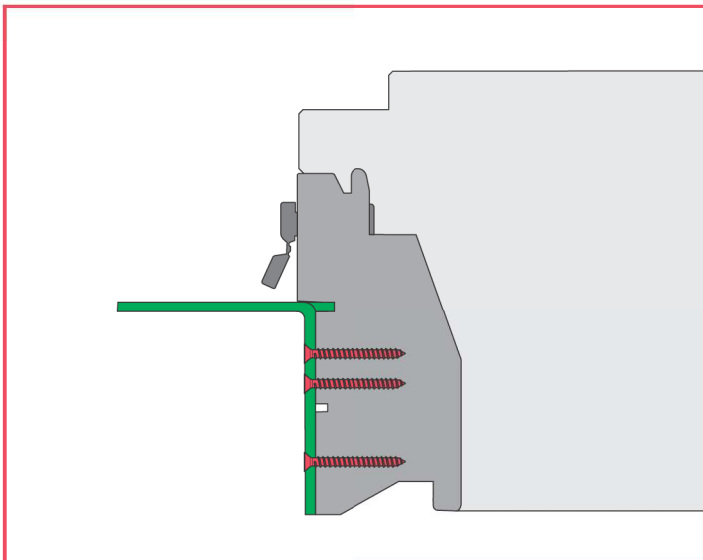
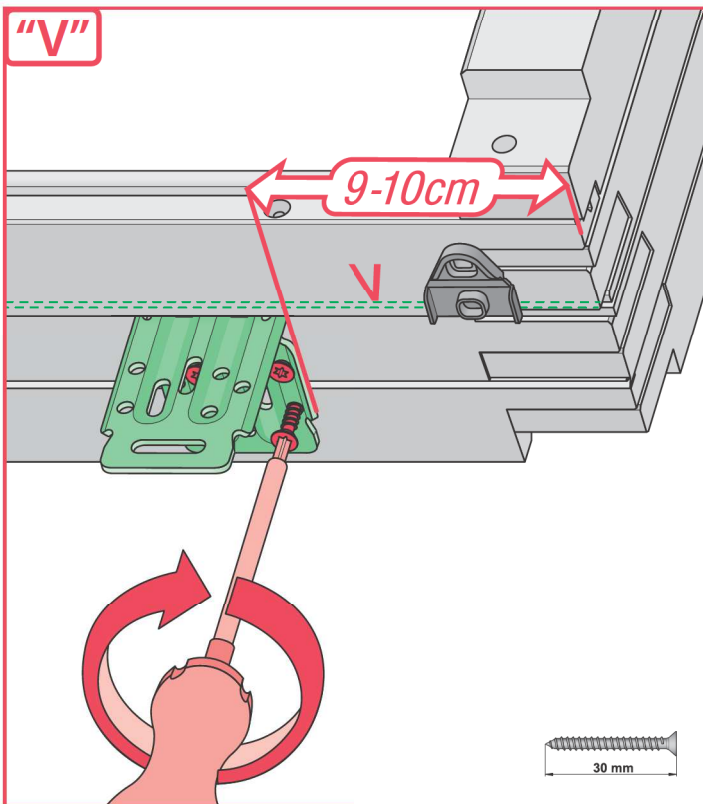


	<p>max 90mm</p>	-	-	-
		EHV		
		-	-	-
	<p>max 45mm</p>	-	-	-
		EZV		
		-	-	-
	<p>max 5mm</p>	-	-	-
		ELV		
		-	-	-
	<p>max 5mm</p>	-	-	-
		ESV		
		-	-	-

1

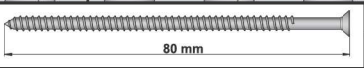
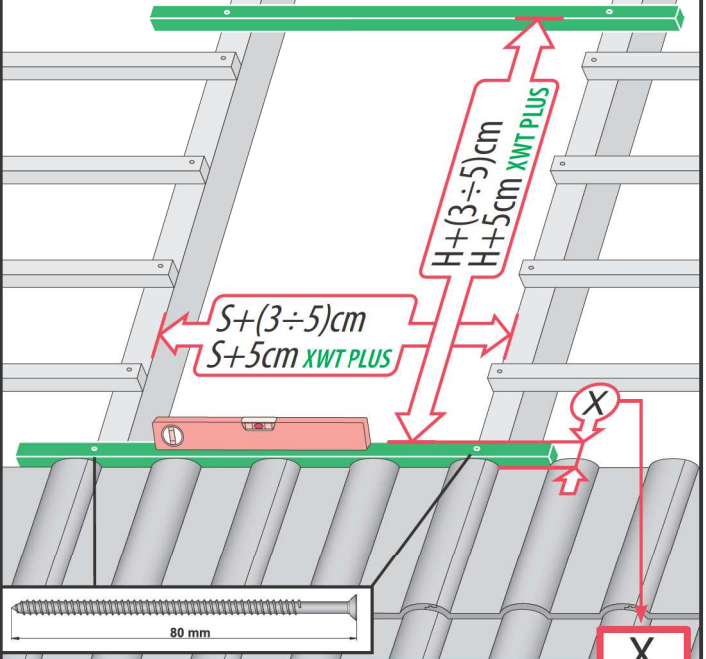
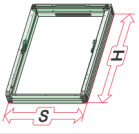


"V"

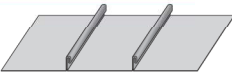
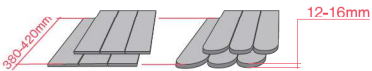


6

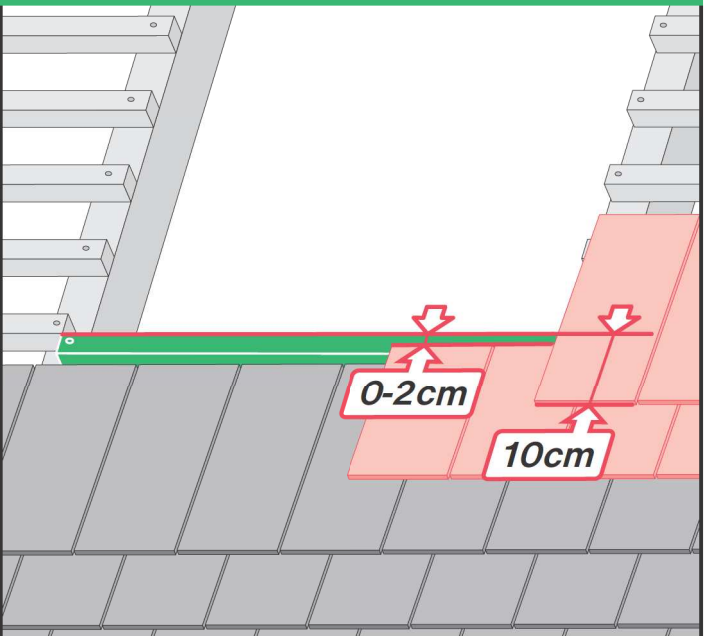
2



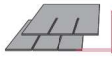
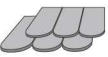
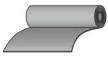
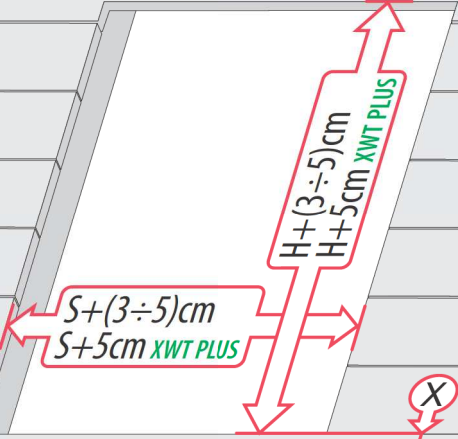
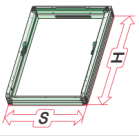
<b>X</b>
EHV 7-10cm
EZV 6-8cm
EGV 6cm
EPV 6cm
ELV 0-2cm
EEV 0-2cm



## ELV



3

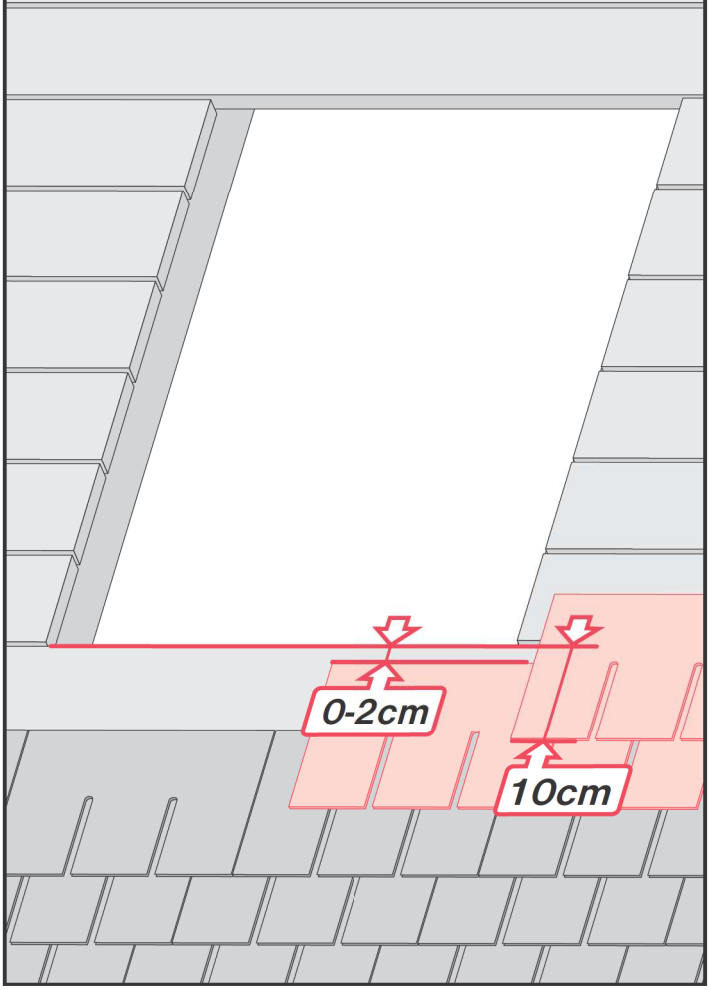


max 5mm

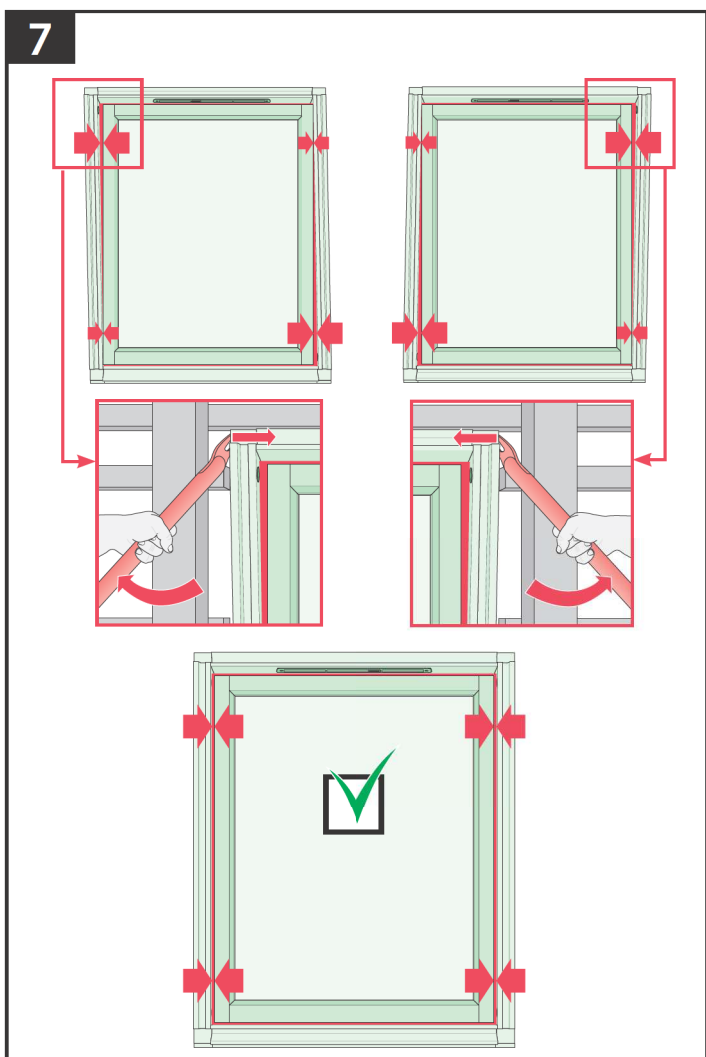
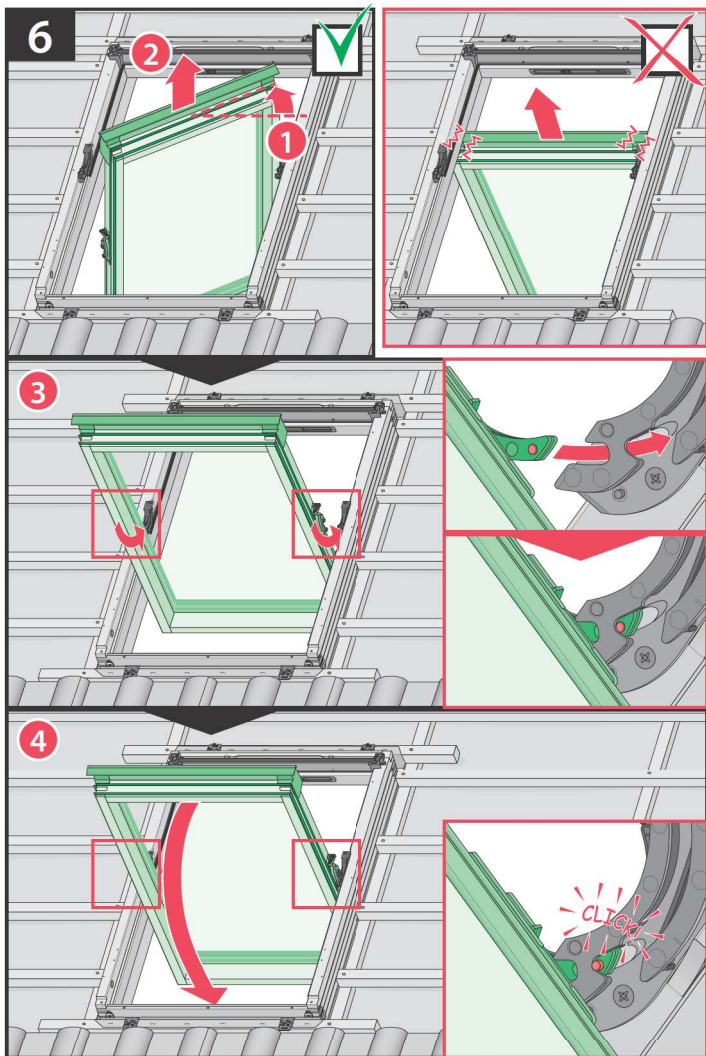
ESV

X
0-2cm

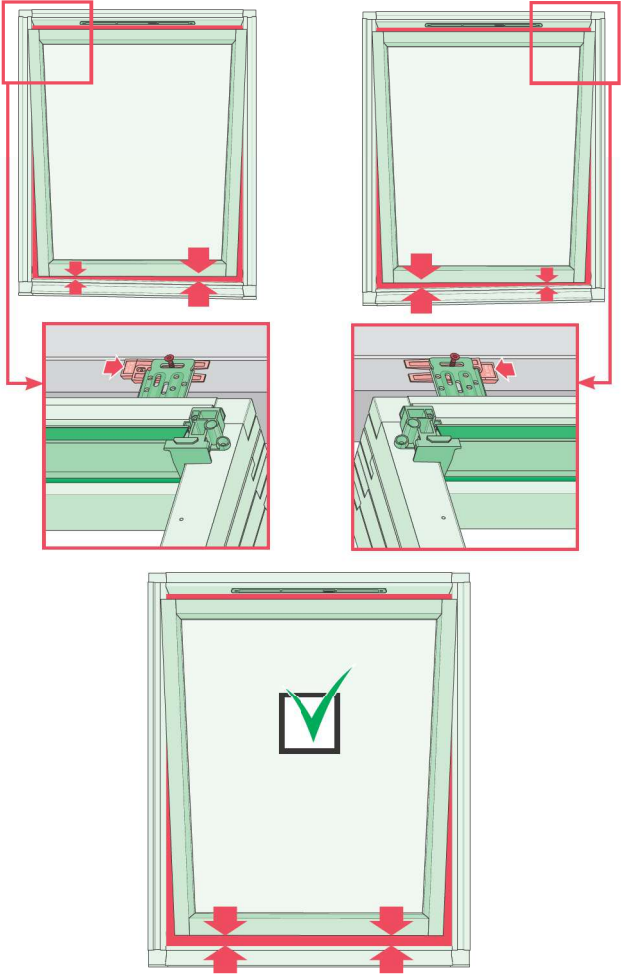
# ESV



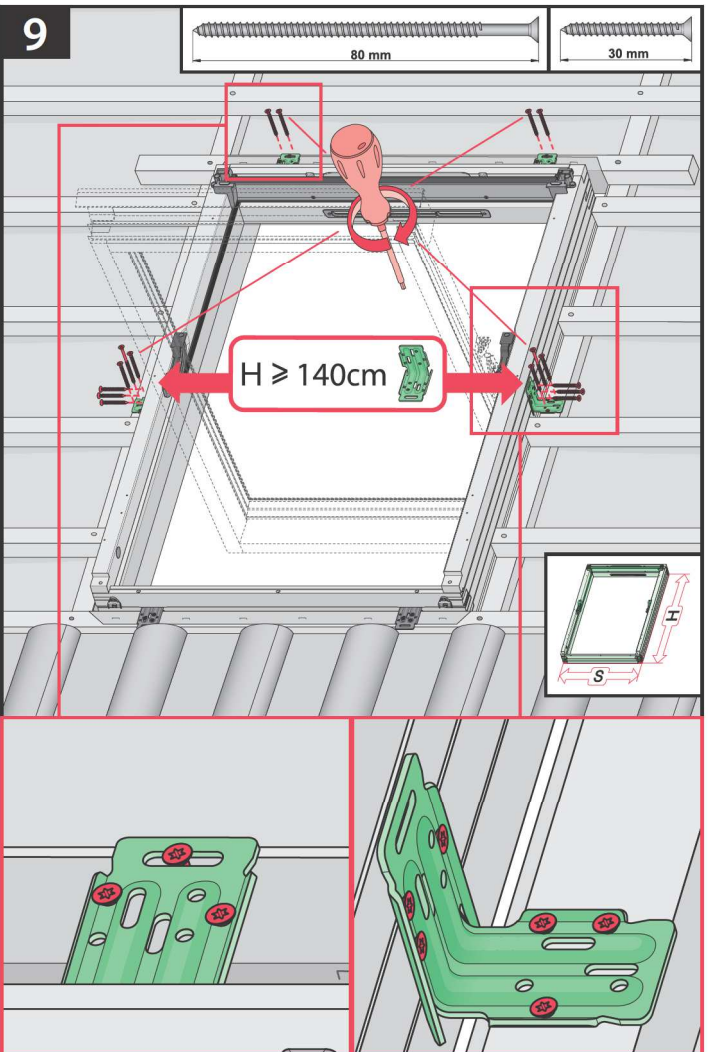




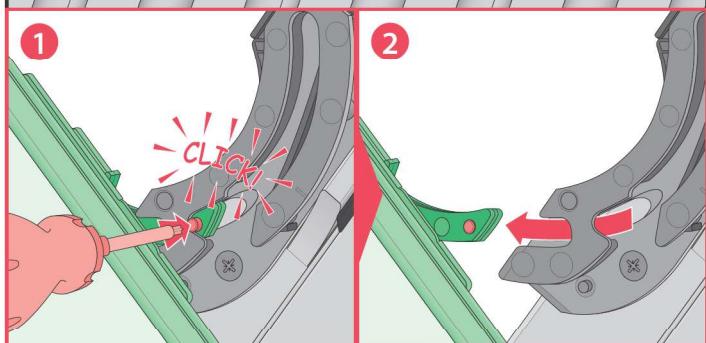
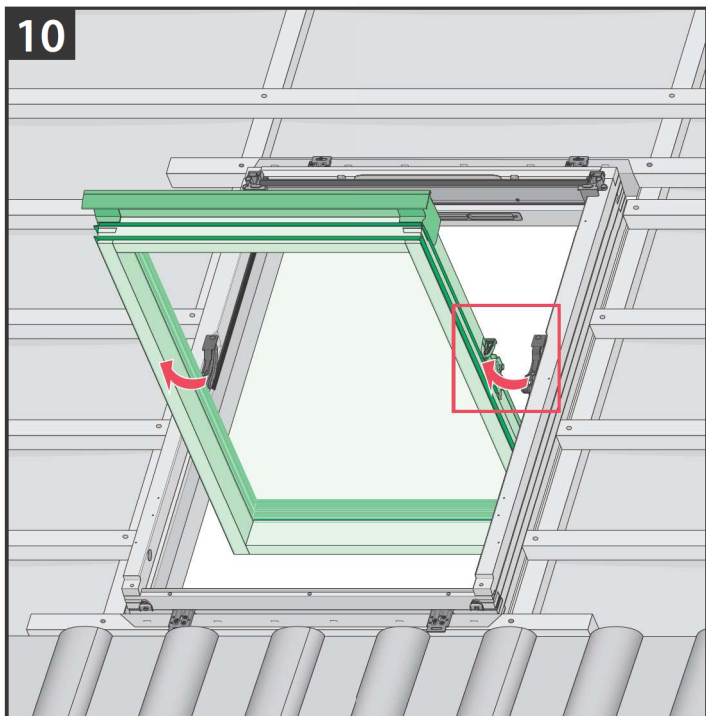
8



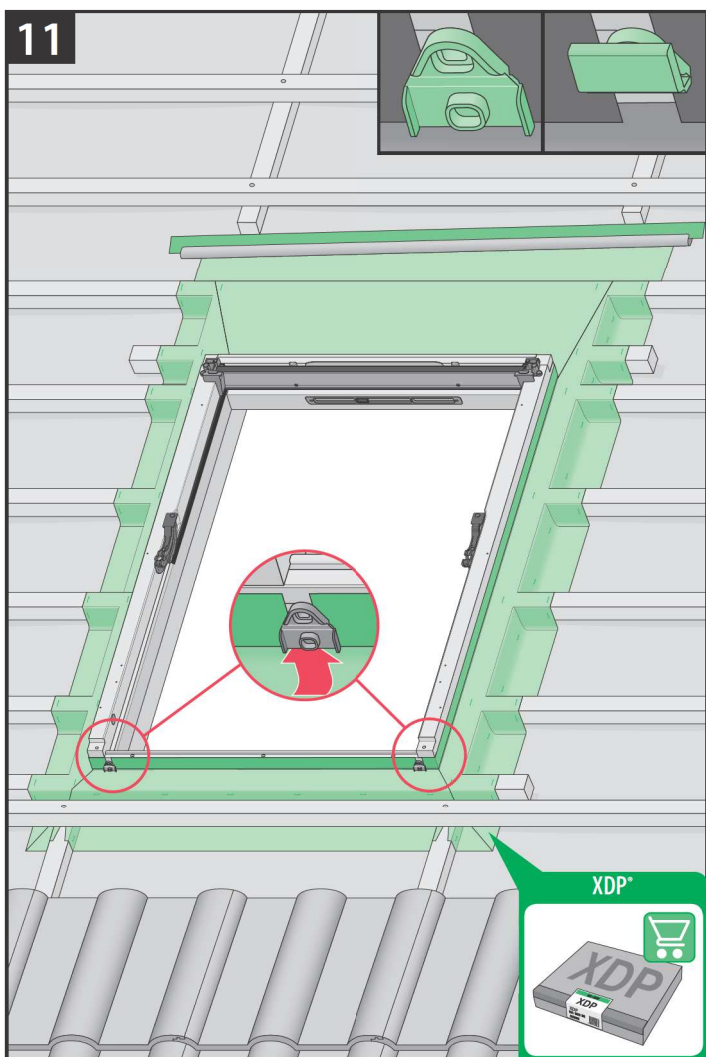
9



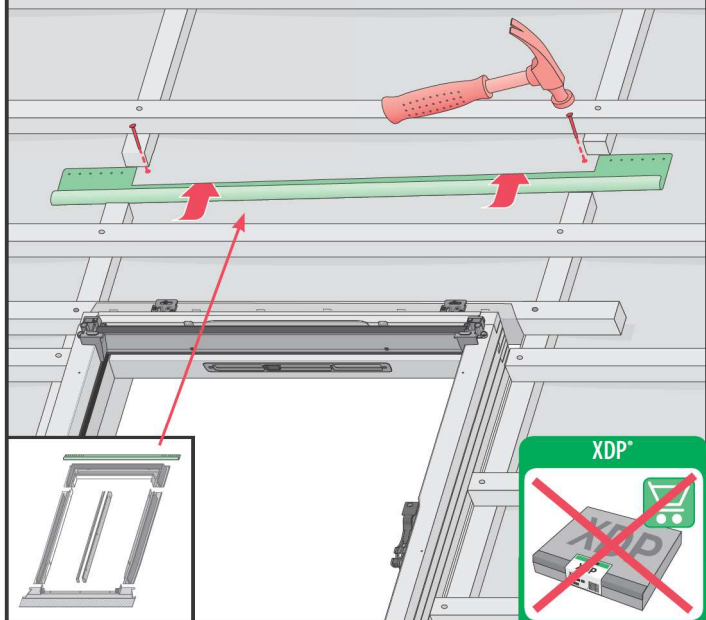
10



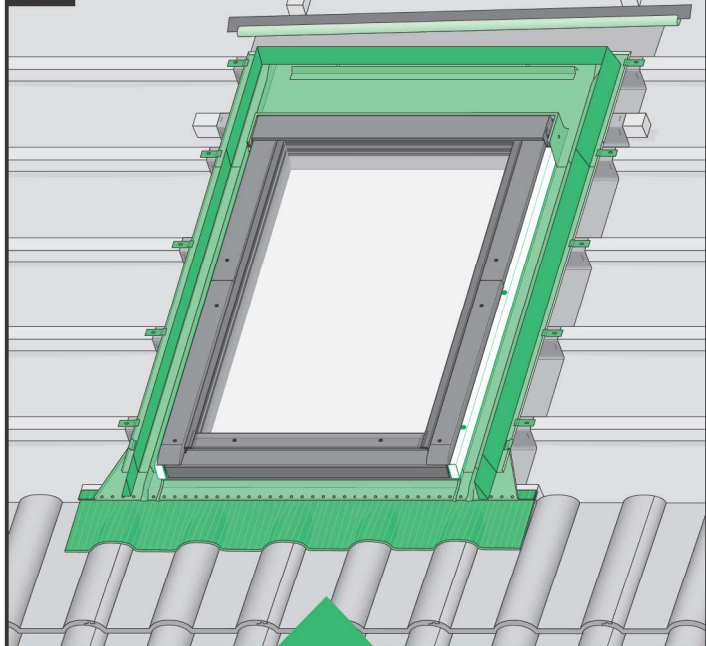
11



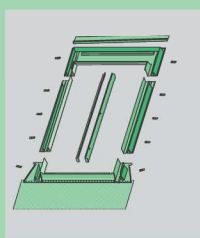
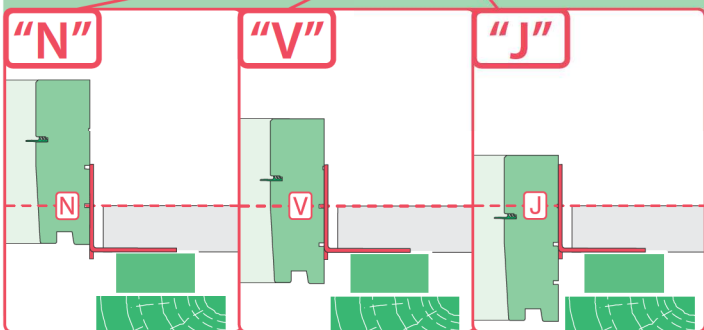
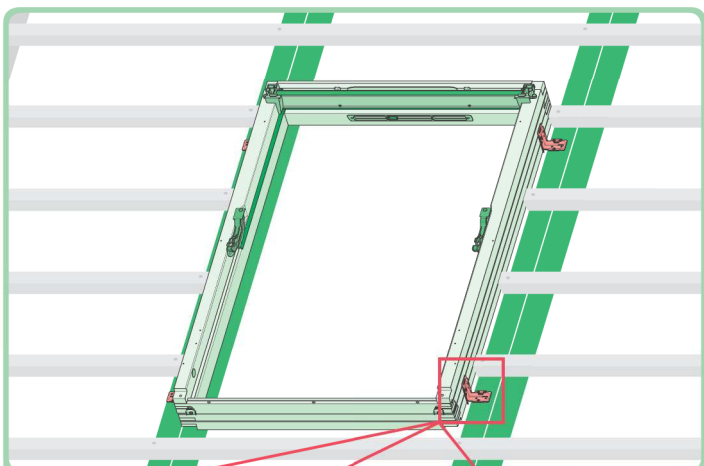
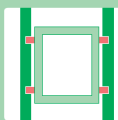
11\*



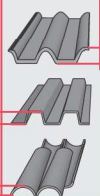
12



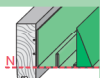
	max 90mm	EHV	
	max 45mm	EZV	
	max 5mm	ESV	
	12-16mm	EGV	
	max 18mm	EPV	
	max 5mm	ELV	
		EEV	



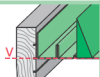
max 90mm



EHN



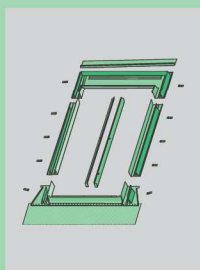
EHV



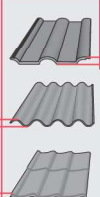
-

-

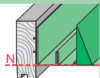
-



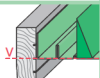
max 45mm



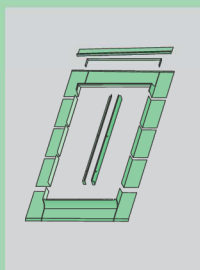
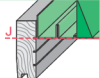
EZN



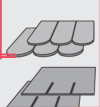
EZV



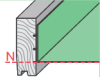
EZJ



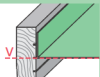
max 15mm (N)  
max 5mm (V)  
max 5mm (J)



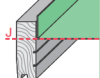
ELN



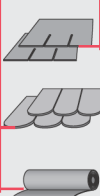
ELV



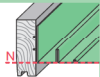
ELJ



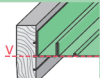
max 5mm



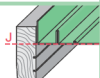
ESN



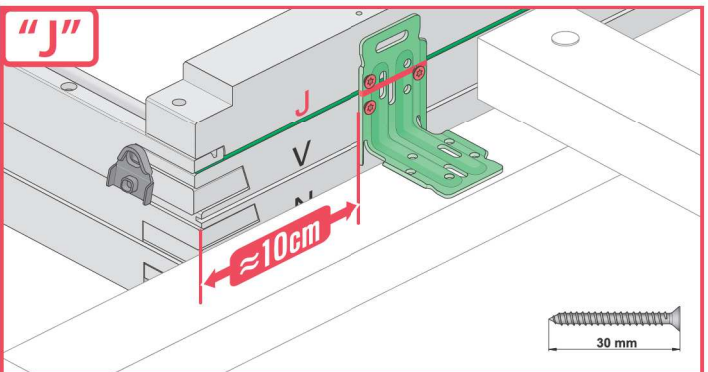
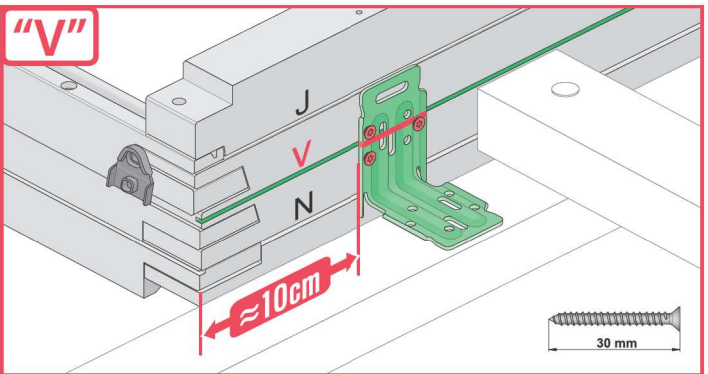
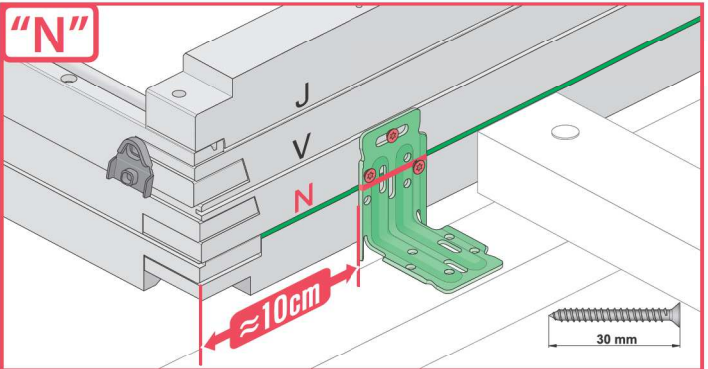
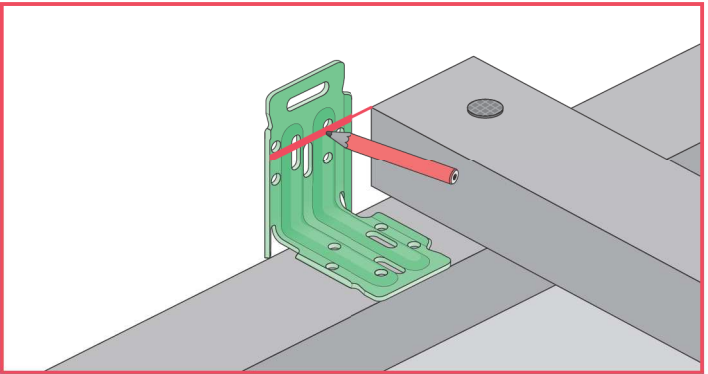
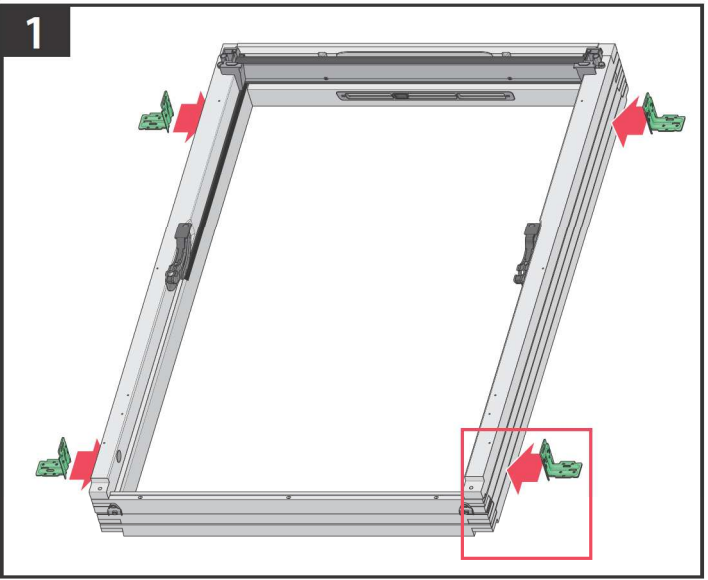
ESV



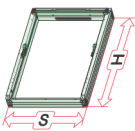
ESJ



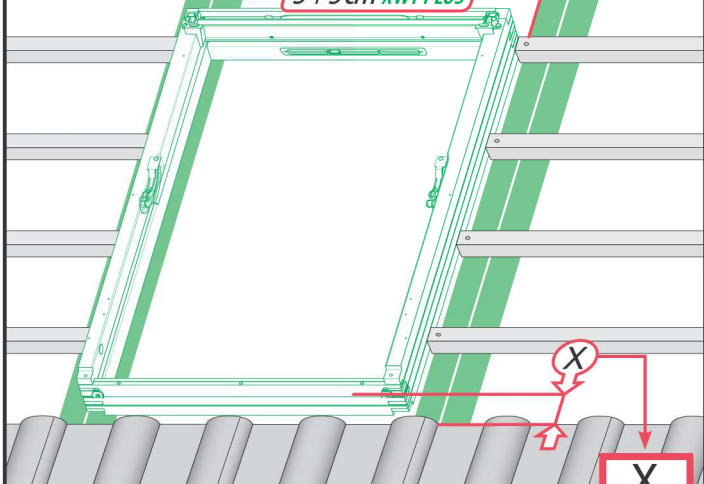
1



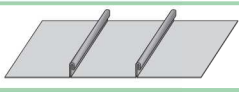
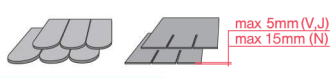
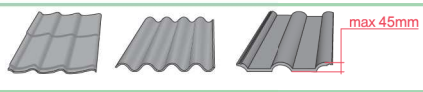
2



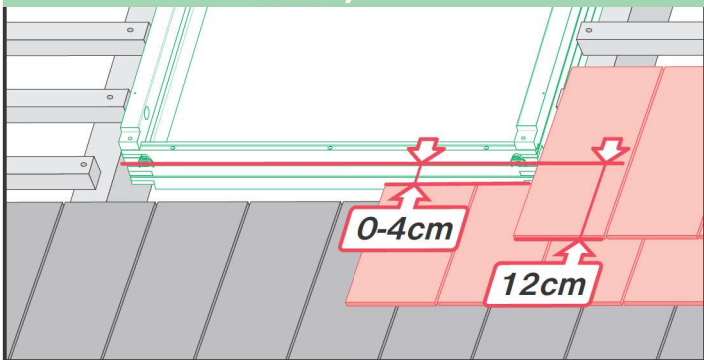
$S + (3 \div 5) \text{cm}$   
 $S + 5 \text{cm XWT PLUS}$



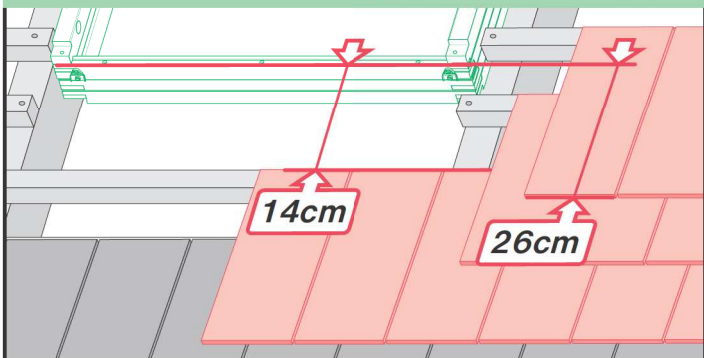
<b>X</b>	
EHN	9-12cm
EHV	9-12cm
EZN	8-10cm
EZV	8-10cm
EZJ	20cm
EGV	6cm
EPV	8cm
ELN	0-4cm
ELV	0-4cm
ELJ	14cm
EEN	0-4cm
EEV	0-4cm
EEJ	14cm



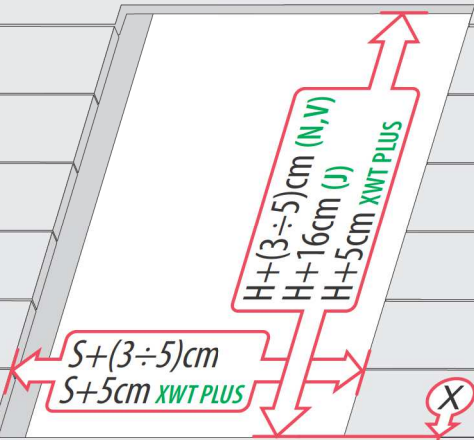
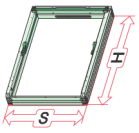
### ELN, ELV



### ELJ



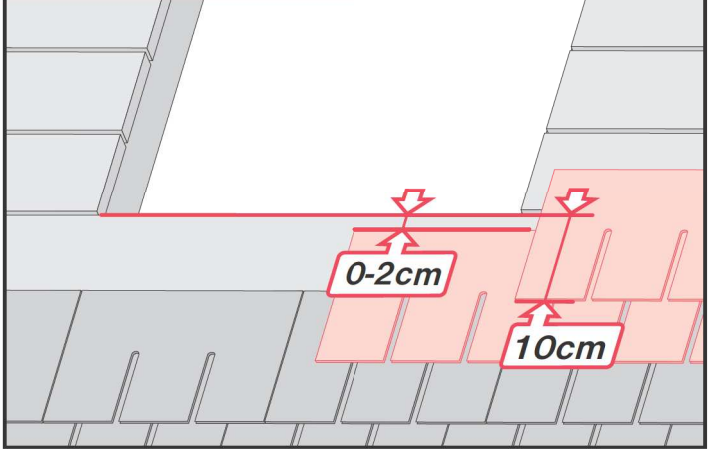
3



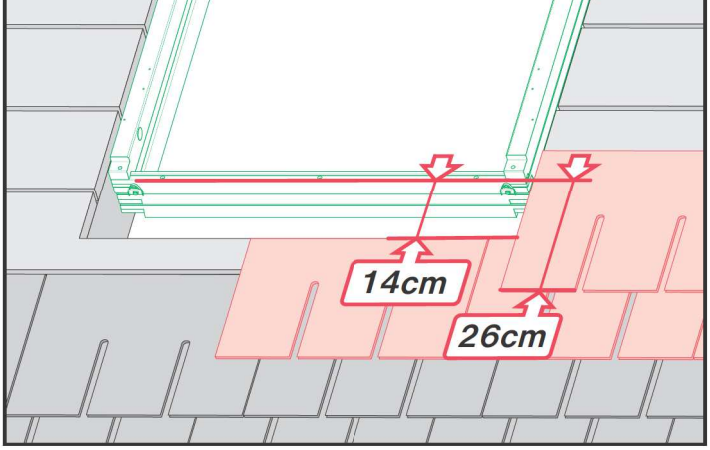
<b>X</b>
ESN 0-2cm
ESV 0-2cm
ESJ 0cm



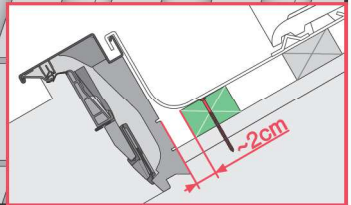
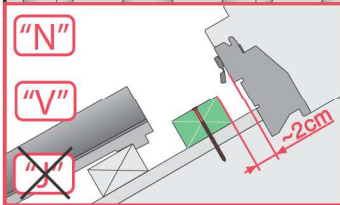
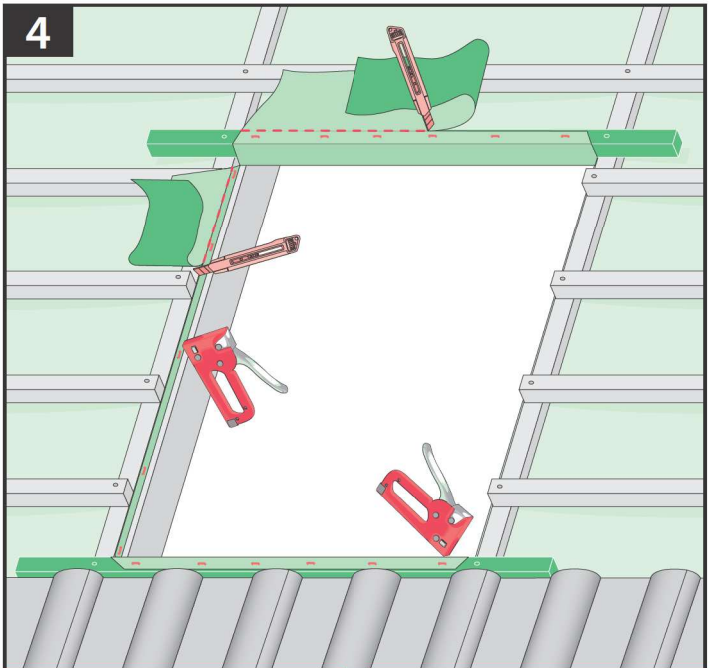
**ESN, ESV**



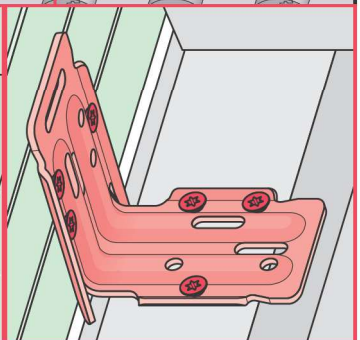
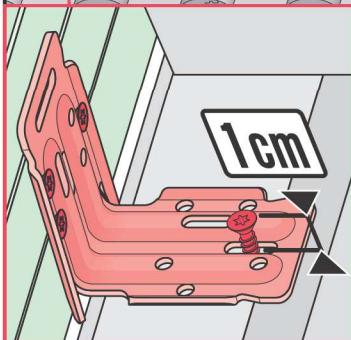
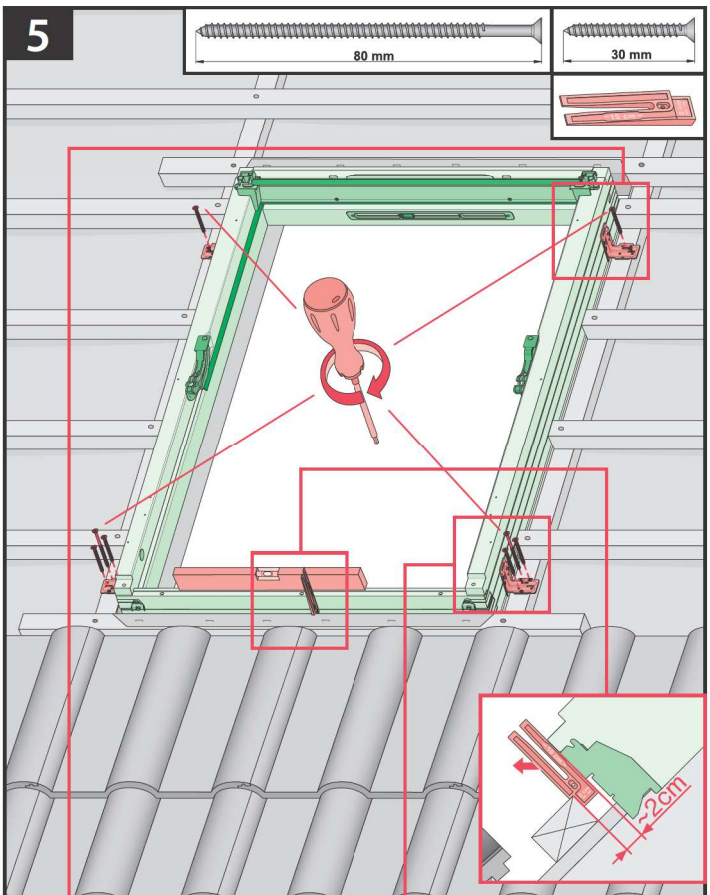
**ESJ**

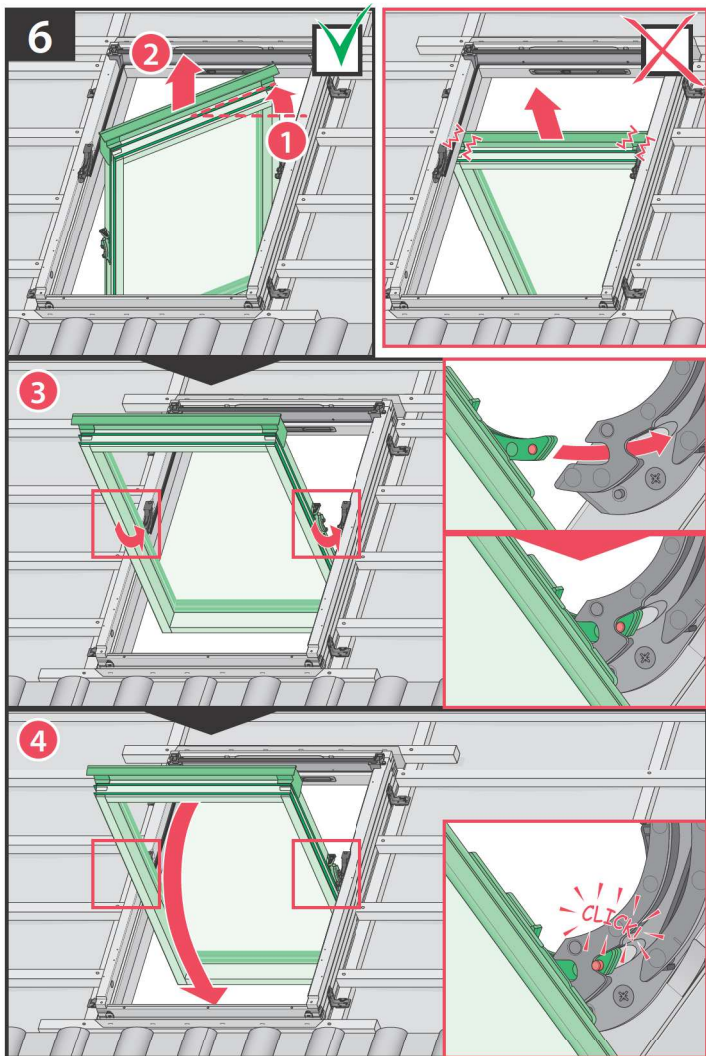


4

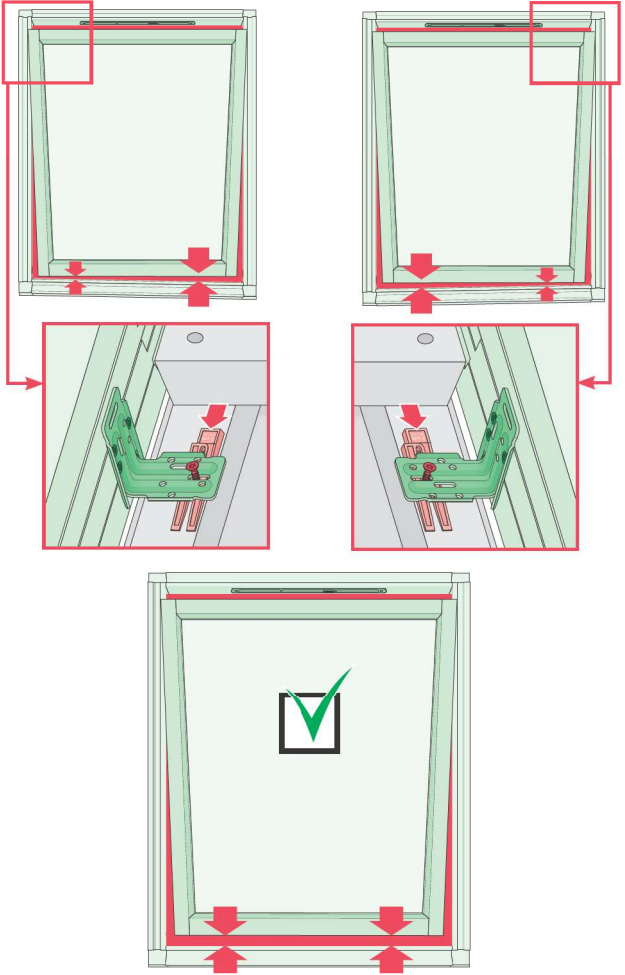


5

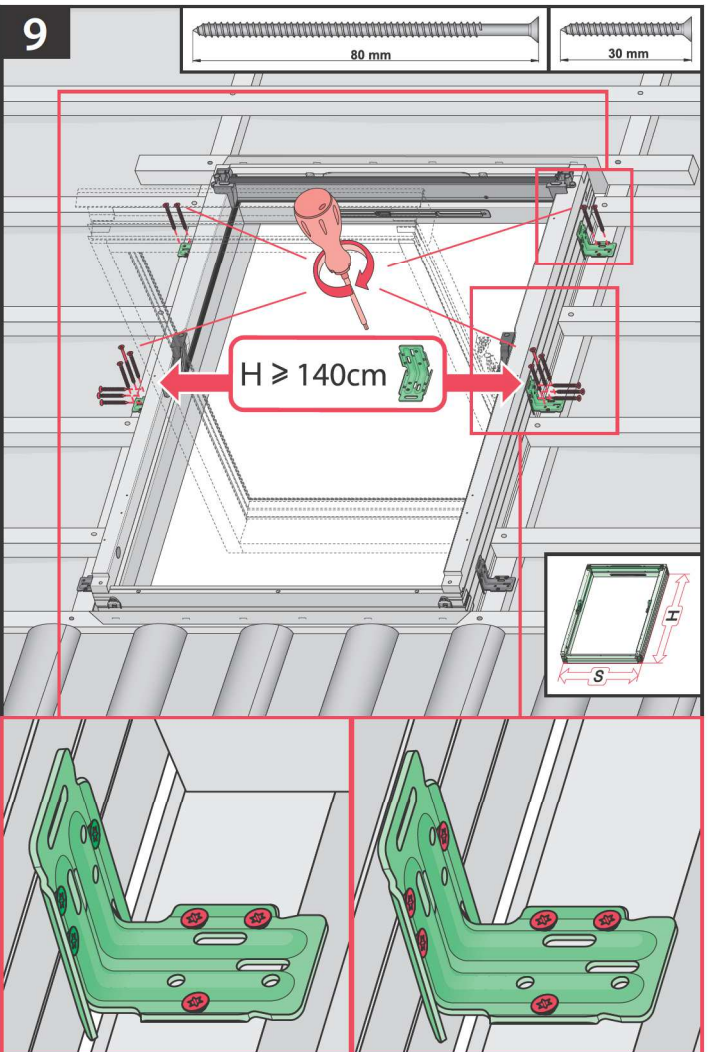




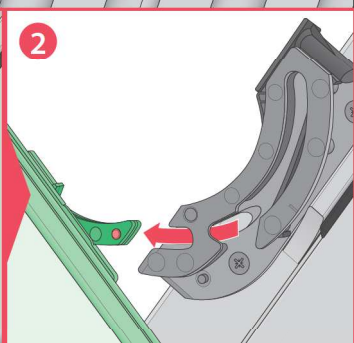
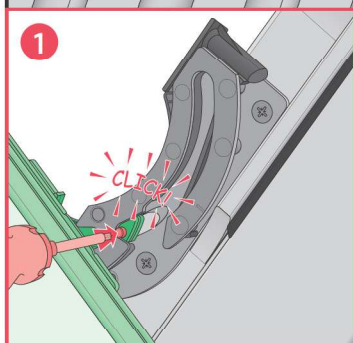
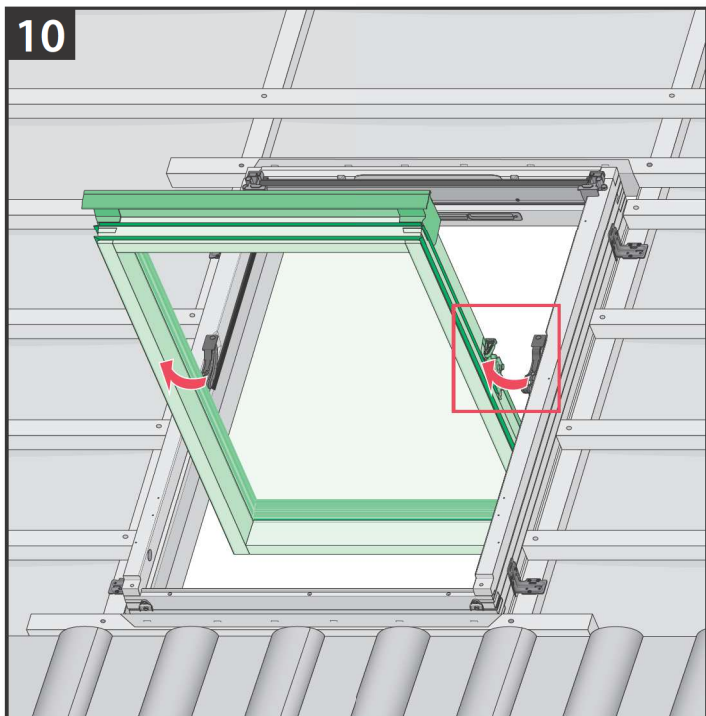
8



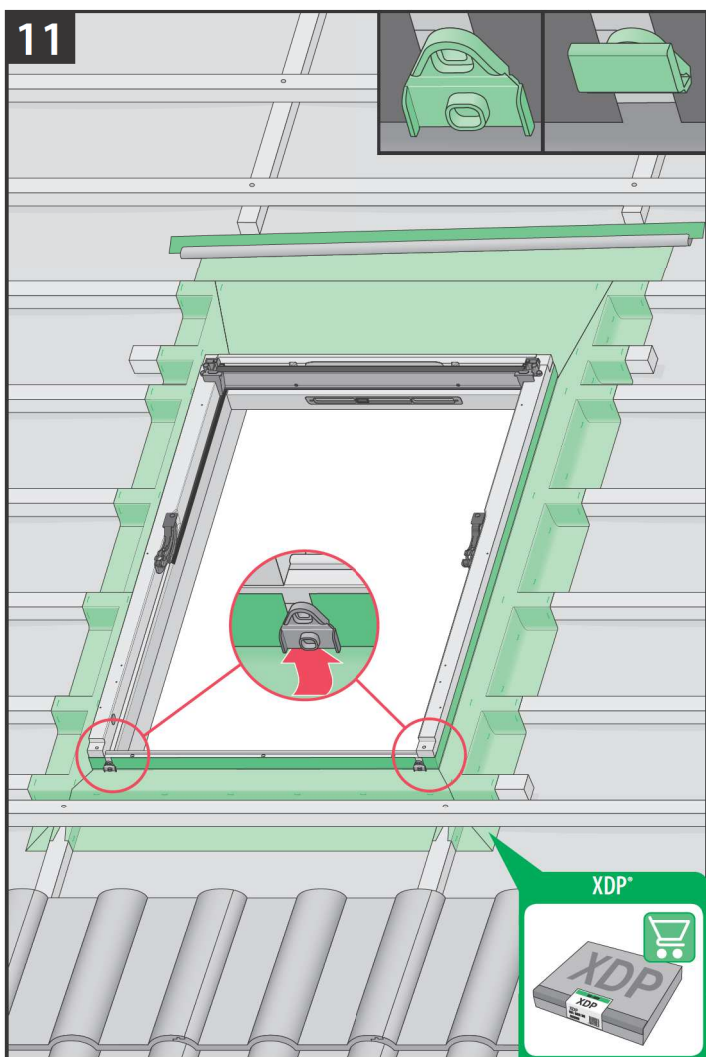
9



10

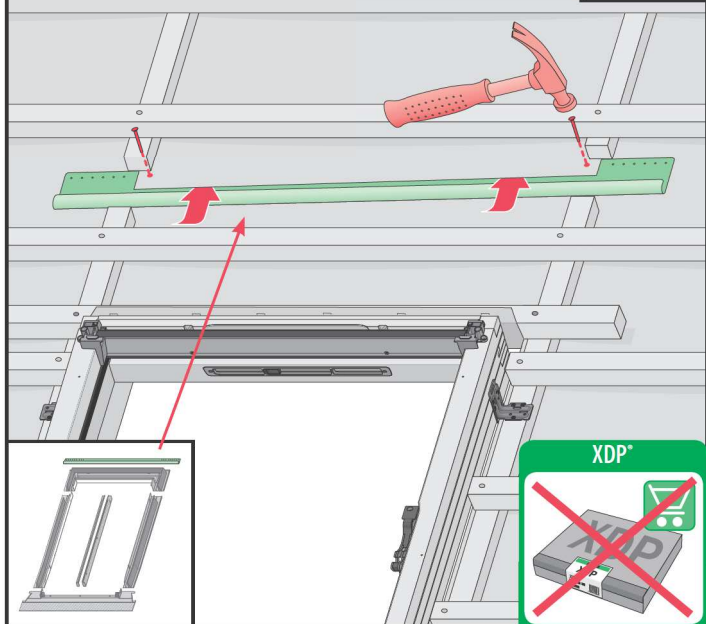


11

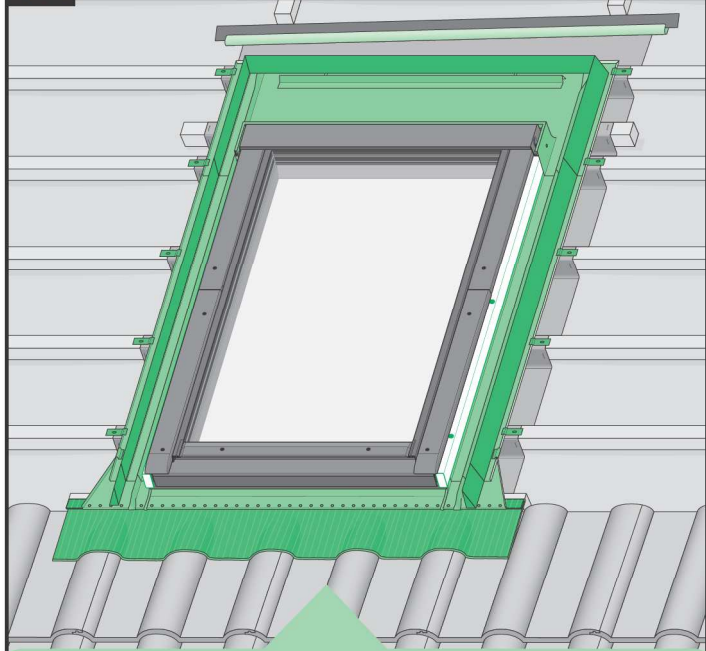


11\*

25 mm



12

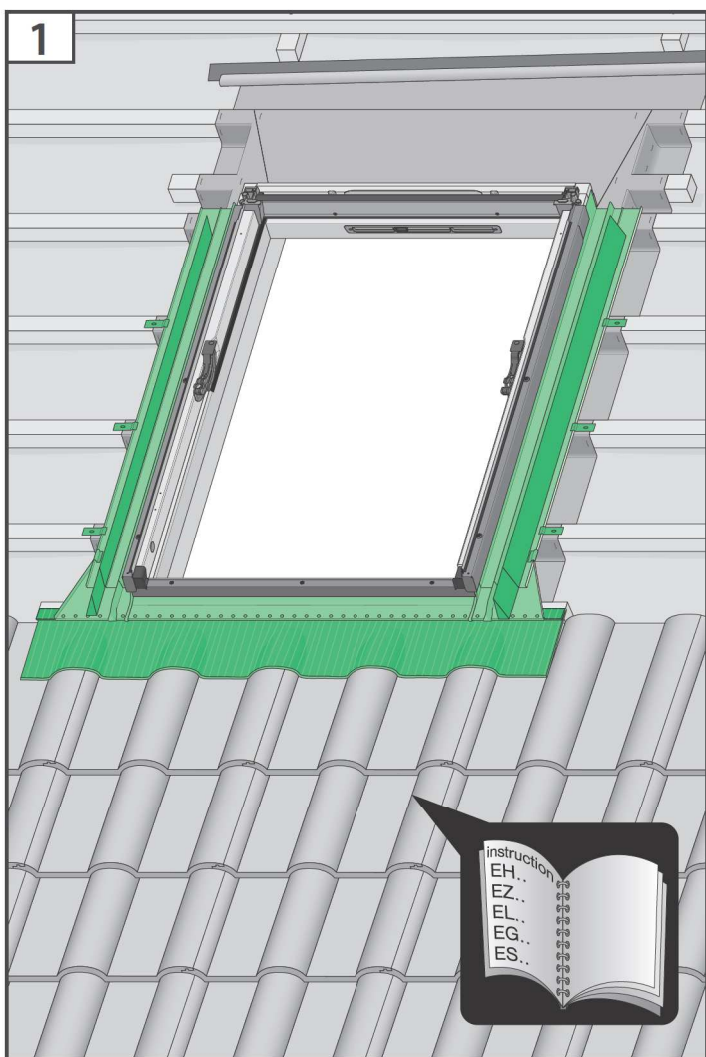
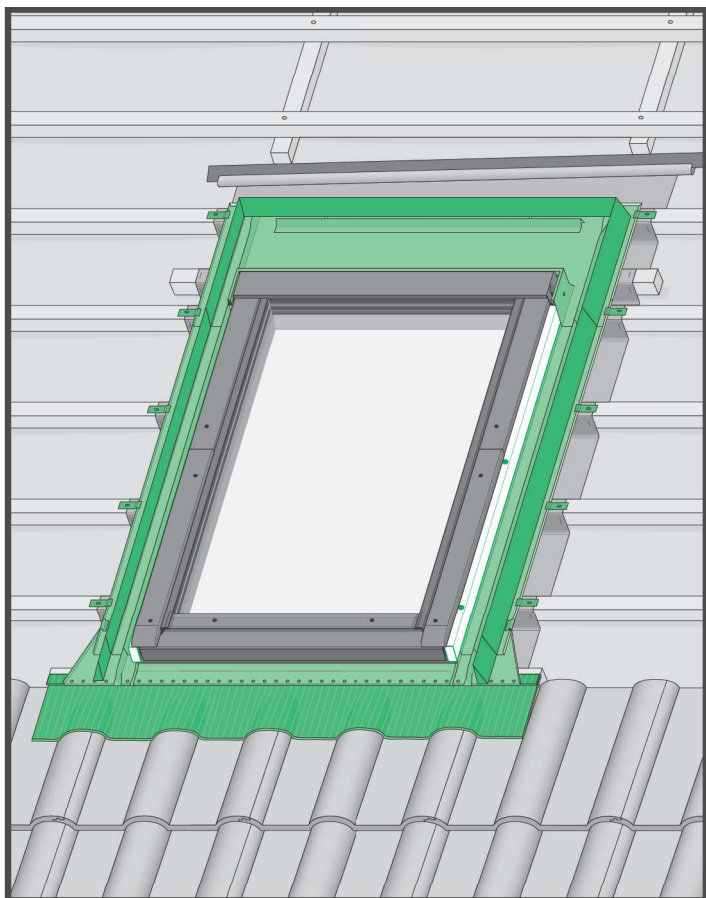


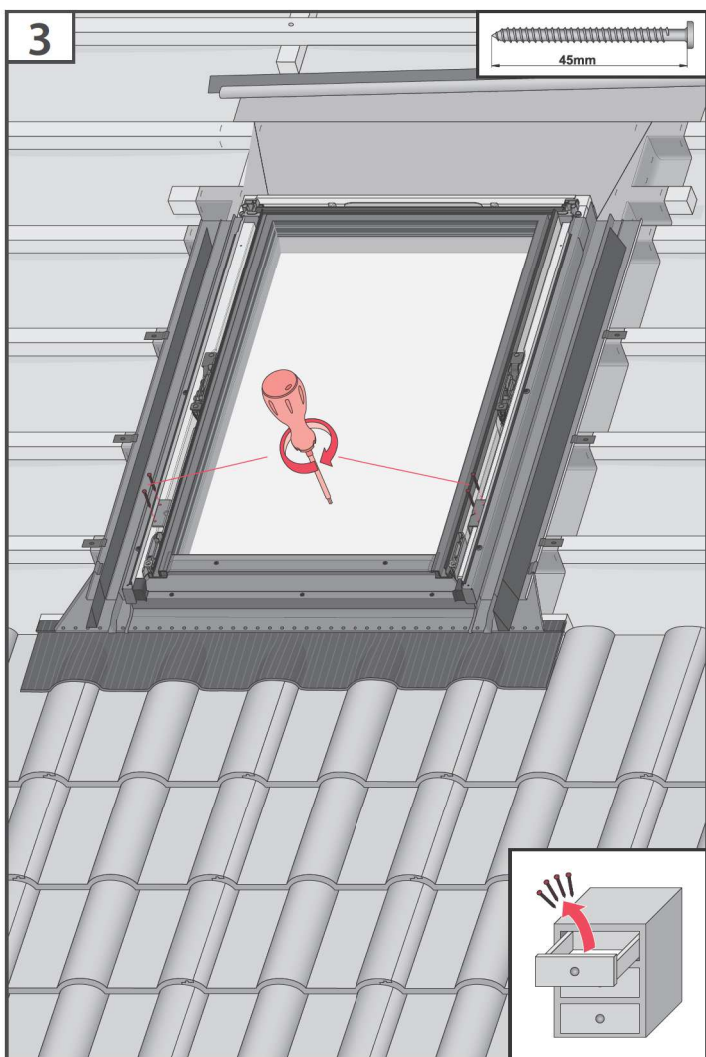
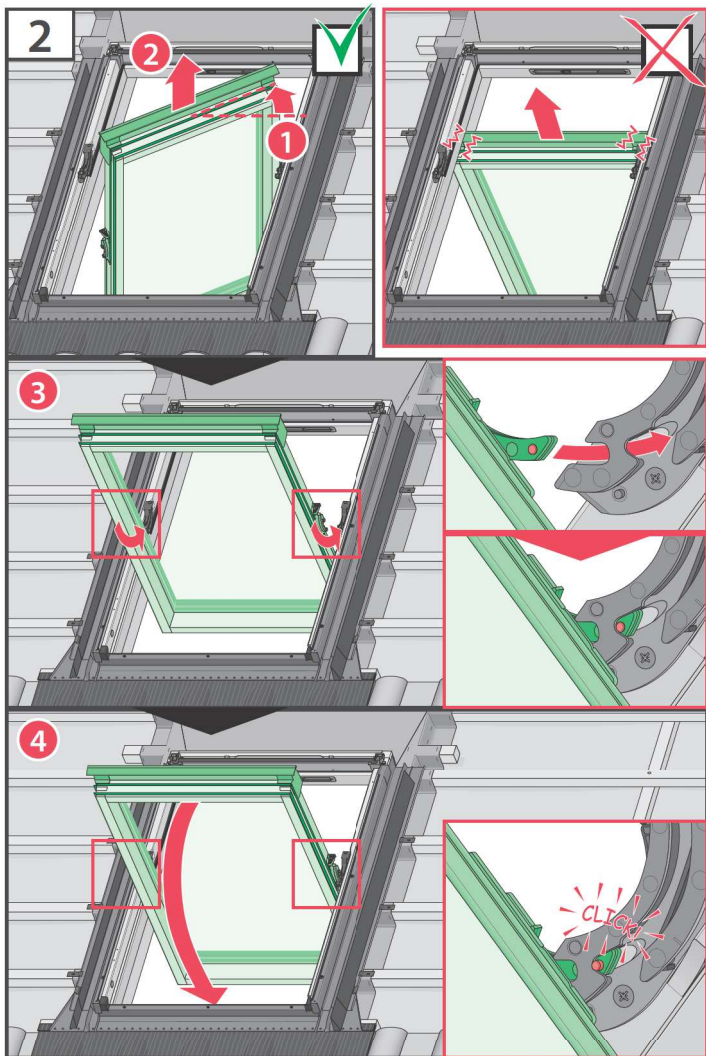
	max 90mm	EHN EHV		
	max 45mm	EZN EZV EZJ		
	max 5mm	ESN ESV ESJ		
	12-16mm	EGV		
	max 18mm	EPV		
	max 5mm (V) max 15mm (N)	ELN ELV ELJ		
		EEN EEV EEJ		

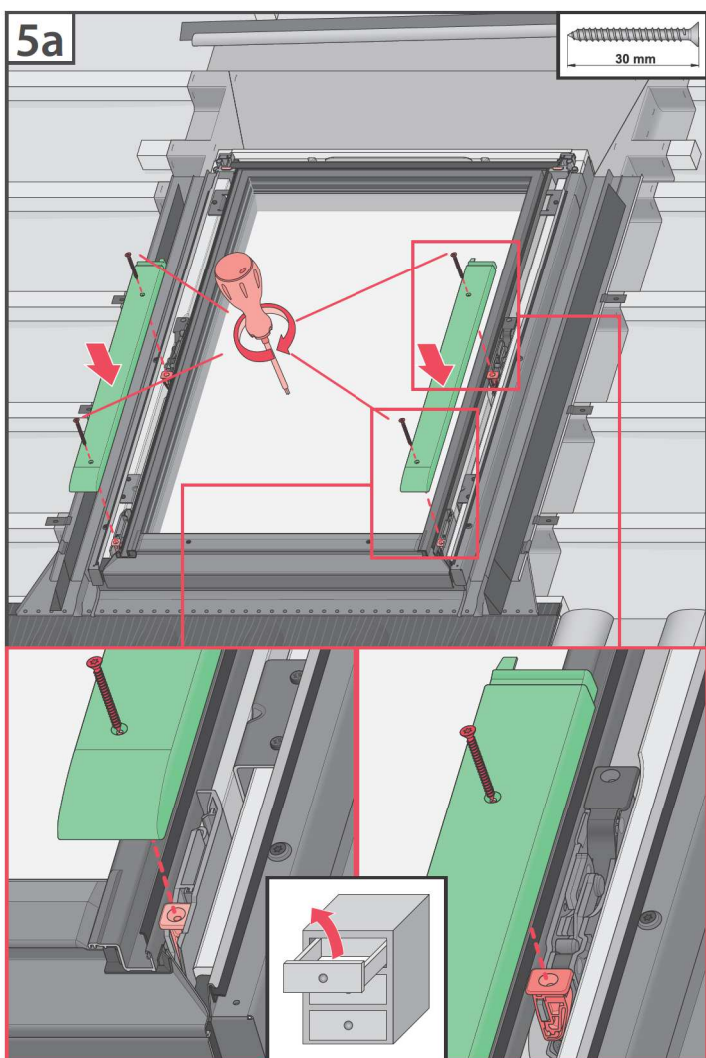
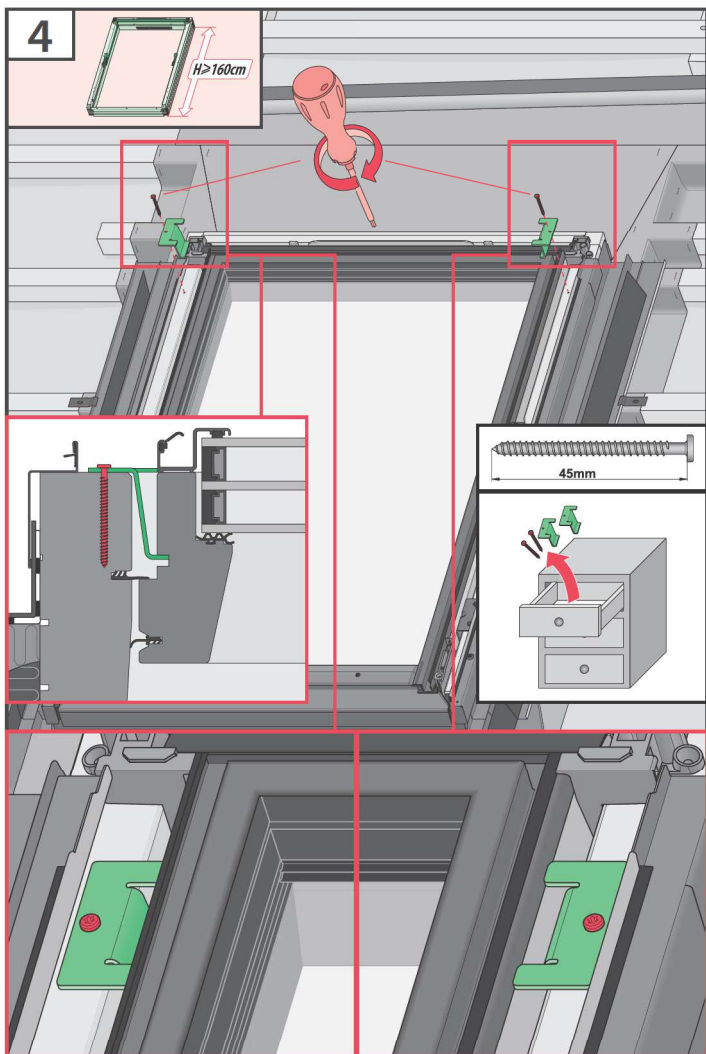


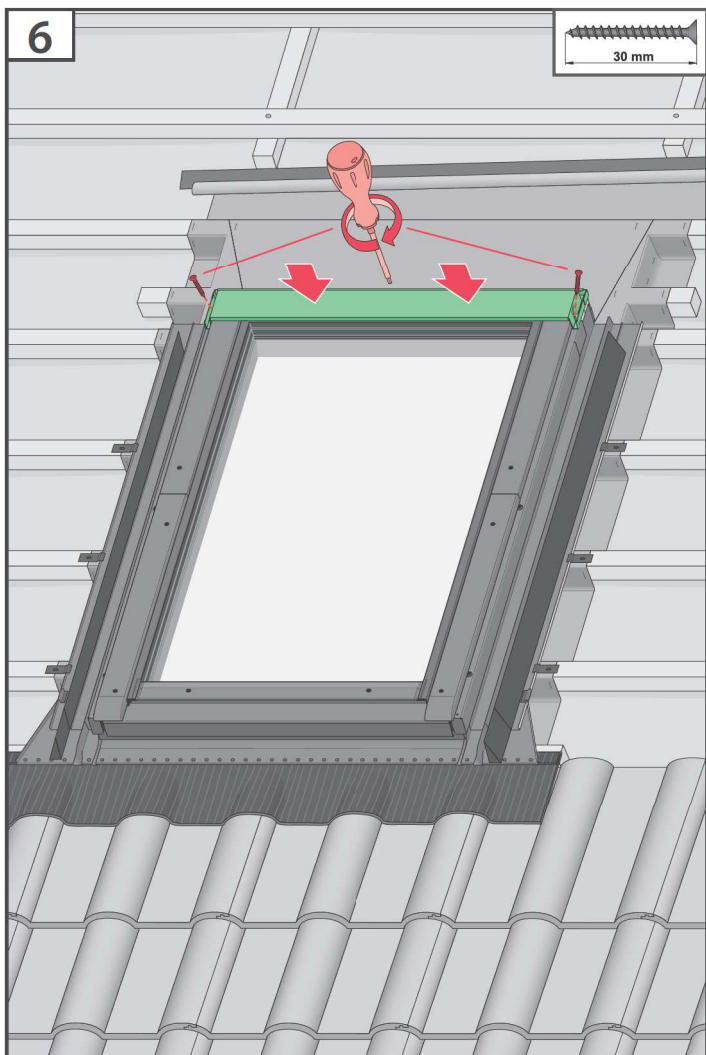
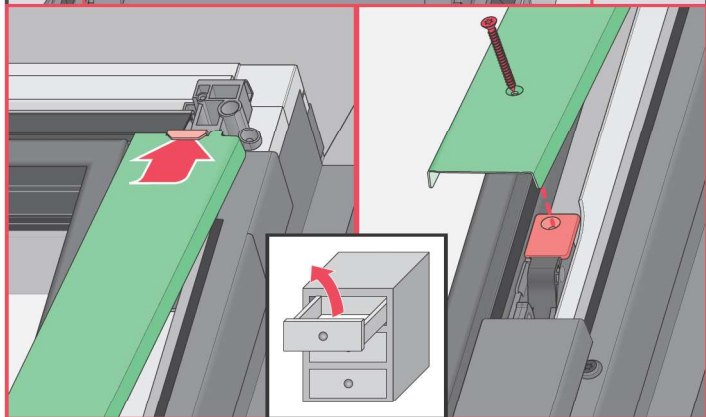
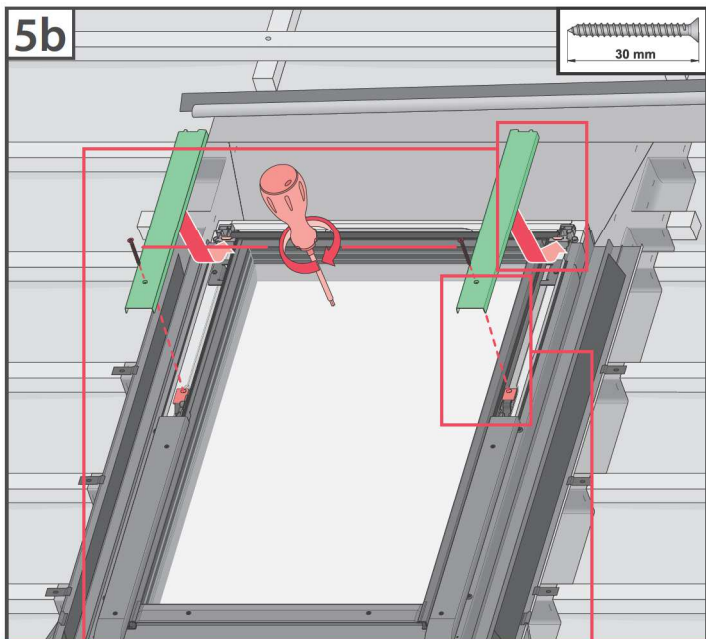


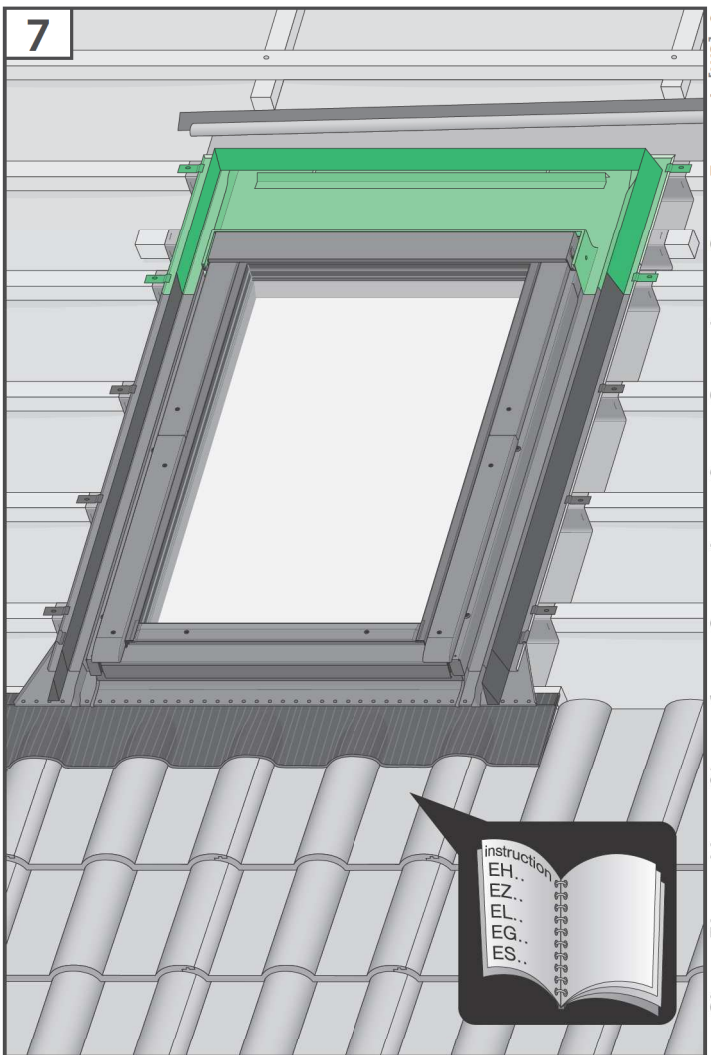
# EH, EZ, EL, ES, ...











<b>BG</b>	Производител и Продавач не носят отговорност за неспазване на съответните закони, строителни норми и изисквания за безопасност от потребителя на продукта, архитекта, монтажника или собственика на сградата.	<b>LT</b>	Ražotājs un mazumtirgotājs neuzņemas atbildību par likumi, noteikumi un drošības prasību neievērošanu no produkta lietotāja, arhitekta, uzstādītāja vai ēkas īpašnieka puses.
<b>CZ</b>	Výrobce ani prodejce nenesou žádnou odpovědnost za nedodržení příslušných platných zákonů, stavebních předpisů a bezpečnostních požadavků uživatelem výrobku, architektem, montážníkem nebo vlastníkem budovy.	<b>LV</b>	Garantojas ir pardavējas neņems atbildību par likumiem, noteikumiem un drošības prasību neievērošanu no produkta lietotāja, arhitekta, uzstādītāja vai ēkas īpašnieka puses.
<b>DE</b>	Hersteller und Verkäufer übernehmen keine Haftung für Nichtbeachtung entsprechender Rechts- und Bauvorschriften sowie Sicherheitsanforderungen seitens Produktbenutzers, Architekten, Monteurs oder Gebäudebesitzers.	<b>NL</b>	De fabrikant en verkoper zijn niet aansprakelijk voor gevolgen bij het niet opvolgen van toepasselijke wetten, bouwbesluiten en veiligheidsvoorschriften door de gebruiker van het product, de architect, de installateur of de eigenaar van het gebouw.
<b>EE</b>	Tootja ja jaemüüja ei vastuta toote kasutaja, arhitekti, paigaldaja või hoone omaniku poolt kehtivate seaduste, määruste ja ohutusnõuete mittejärgmise eest.	<b>PL</b>	Producent i Sprzedawca nie ponosi żadnej odpowiedzialności za nieprzestrzeganie stosownych przepisów prawa, przepisów budowlanych i wymogów bezpieczeństwa przez użytkownika produktu, architekta, montażystę lub właściciela budynku.
<b>ES</b>	El fabricante y el vendedor no tienen ninguna responsabilidad por el incumplimiento de la ley vigente, normas de construcción y exigencias de seguridad por parte del usuario del producto, arquitecto, instalador o el propietario del edificio.	<b>PT</b>	O fabricante e o vendedor não tem nenhuma responsabilidade pelo o não cumprimento da lei, códigos de construção e as exigências de segurança por parte do usuário do produto, arquiteto, instalador ou proprietário do edifício.
<b>FR</b>	Le fabricant et le revendeur ne prend aucune responsabilité de ne pas respecter les lois applicables, les règlements sur les bâtiments et les exigences de sécurité par l'utilisateur du produit, l'architecte, l'installateur ou le propriétaire du bâtiment.	<b>RO</b>	Nici producătorul, nici distribuitorul nu își vor asuma niciun fel de răspundere pentru nerespectarea legilor în vigoare, a legilor din domeniul construcțiilor sau a măsurilor de siguranță impuse utilizatorilor produsului, arhitecților, montajorilor sau proprietarilor clădirii.
<b>GB</b>	Manufacturer and Seller shall bear no liability for failure to comply with the applicable laws, building codes and safety requirements by the user of the product, architect, fitter or owner of the building.	<b>RU</b>	В случае несоблюдения архитектором, монтажником или владельцем здания строительных правил и норм безопасности ответственность с производителя и продавца снимается.
<b>HU</b>	A Gyártó és a Forgalmazó nem vállal semmiféle felelősséget a vonatkozó törvény, építési és biztonsági előírások, termékhasználat, építész, beépítőmester vagy épülettulajdonos általi be nem tartásáért.	<b>SK</b>	Výrobca a predávca nenesú žiadnu zodpovednosť za nedodržanie príslušných ustanovení zákona, stavebných predpisov a bezpečnostných požiadaviek užívateľom výrobku, architektom, montážom alebo majiteľom objektu.
<b>IT</b>	Il Produttore e il Rivenditore non potranno essere ritenuti responsabili per il mancato rispetto, da parte dell'utente del prodotto, del progettista, dell'installatore o del proprietario dell'edificio, delle leggi vigenti, nonché dei regolamenti edilizi e di quelli relativi alla sicurezza.		